

Inspiring success



Teesside
University

School of Health & Social Care

Winter 2011-12

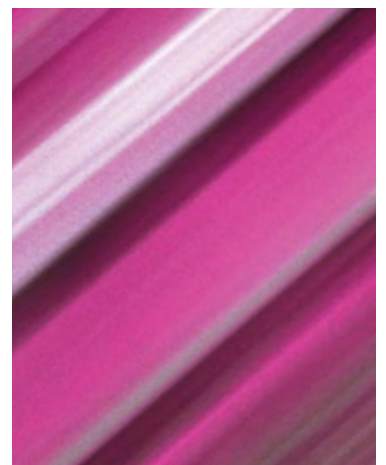
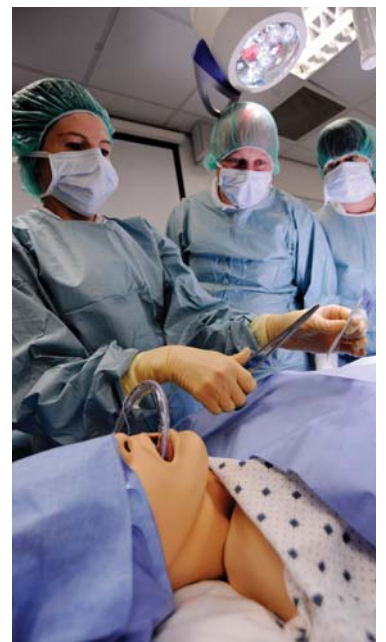
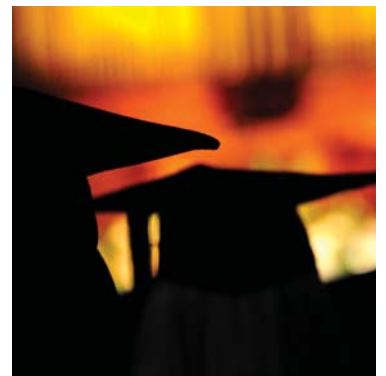
Newsletter



Graduation 2011

See pages 7 to 9 for a celebration of this year's many successes.

2009/10
Times Higher Education
UNIVERSITY OF THE YEAR



Welcome

Professor Paul Keane OBE

I am pleased you have taken the opportunity to read our winter 2011-12 newsletter. This is just a snapshot of the learning and teaching, enterprise and research activities which we deliver.

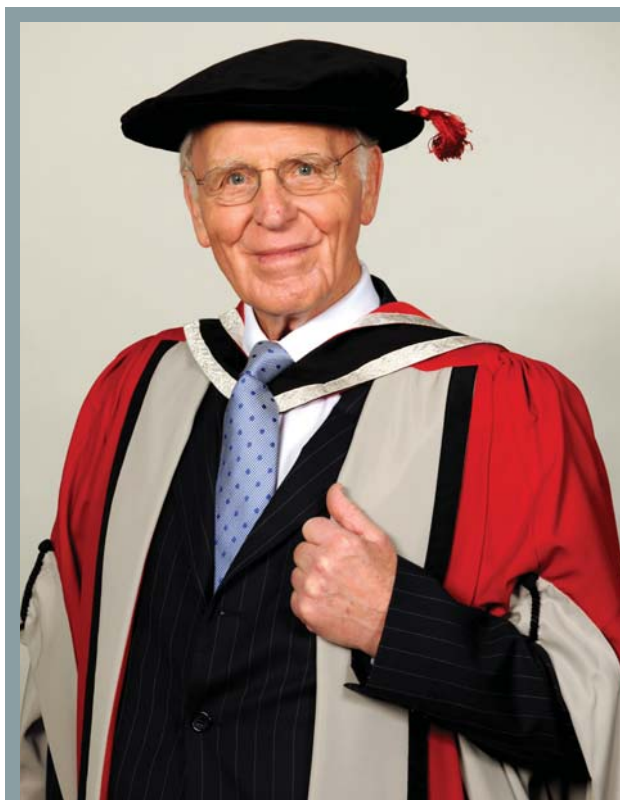
We continue to value our partnership and collaborative working with all external stakeholders. This ensures that our activity remains applicable and relevant to health and social care services and in particular to service users and carers.

We are, like all organisations at this time, preparing ourselves for what may be some difficult years ahead. Consequently, we continue to review our academic portfolio to ensure we are delivering cost-effective and affordable provision without compromising on the excellent quality we have achieved over a number of years. Our high standards have again been reflected in our recent National Student Survey results which confirm that once again a number of our programmes realised over 90% student satisfaction.

Wishing you a most enjoyable festive season and very best wishes for 2012.



Professor Paul Keane, OBE
Dean, School of Health & Social Care



Sir Peter Carr receives a Doctor of Laws

Sir Peter Carr was awarded his honorary Doctor of Laws at Middlesbrough Town Hall at the School of Health & Social Care academic awards celebrations.

Sir Peter started his working life as a carpenter and went on to Chair the North East Strategic Health Authority until October 2011, when it was re-shaped under government reforms.

He has held the Chairmanship of NHS organisations in the region since 1990. Sir Peter has now been appointed to the Chairmanship of a new national NHS organisation.

From 1984 to 1990 he was head of the Government City Action team in the North East. Prior to that he held a senior position in the diplomatic service.

Sir Peter was a founding director of the conciliation service ACAS and has served in various government bodies, including as Director of the Commission on Industrial Relations, and as a special adviser to the pay body NBPI.

Congratulations to Professor Liz Holey

The School is pleased to announce the conferment of Professorship in Physiotherapy to Deputy Dean Liz Holey.

Liz says, 'I am very proud to have been awarded a professorship in physiotherapy. I have seen a lot of developments in the profession since I qualified in 1978. My special interest is in the treatment of joints, muscles and nerves, and I have improved our understanding of how treating soft tissues relieves pain and disability. Physiotherapy became a University subject from the 1980s and I played a significant role in setting up new academic courses in Leeds, Norwich and York.

'I have had many new opportunities at Teesside and have had the privilege of working with inspirational and talented colleagues. We have catalysed professional developments in Malaysia and Germany through our programmes and I have been able to work with the Strategic Health Authority on developments in the rehabilitation professions and education commissioning. I am now working with colleagues in the US and Canada on research into the physiotherapy workforce.

'I intend to make sure that my professorship benefits the University. It is a great place to work and I am aware how fortunate I am to work with excellent colleagues, making a difference to the lives of students in the North East who in turn, will make a difference to our healthcare.'



Praise for our students

Recently I spent a week on ward 31 at North Tees Hospital following an emergency admission and rather traumatic and emotional surgery.

During my time there (3-7 July) student nurses from Teesside University were a daily part of my care team dealing with everything from taking hourly observations and changing my dressings to just sitting and talking with me.

On my return to work I wanted to express just how fantastic the student nurses were. They were extremely professional at all times and always explained exactly what they were doing and why, and how this related to my overall care plan. Nothing was too much trouble and they undertook every task with a smile on their faces. Most importantly, they also took into consideration what I had experienced and spent time talking with me, discussing how I felt and reassuring me that I would get stronger. I felt that they understood my emotional as well as physical needs during my stay and went out of their way to talk to me at any time of the day or night.

I can honestly say that thanks to their hard work, sensitivity and professionalism they made me feel relaxed, supported and cared for during what could have been a horrible time for me. During my stay I was visited by one of the senior ward sisters who was conducting a survey into the nursing care and how involved I, as a patient, felt in this process. I couldn't have praised the entire staff more, and I made particular mention of the student nurses. The senior ward sister was due to report back to the hospital management team that afternoon and was so pleased to hear about my experience with the staff and students that she asked if she could repeat this to the team.

Nurses do a very hard job with long hours, often thanklessly, in the constant glare of media criticism. I feel proud to work at a University that produces nurses of such a high calibre and felt it was important that I shared with you how grateful I am for them.

Lucy Johnson, Project Co-ordinator Academies and Trusts, Teesside University.

LEGACIES LIVE ON



Leanne receives the Victoria Lawrence Award

Lynne and Ian Lawrence attended the graduation ceremony to meet this year's recipient of an award dedicated to their daughter Victoria, who died suddenly at the age of 19, just months after starting her nursing degree course in December 2008.

The *Victoria Lawrence Award* was received by **Leanne Weedall** for the best student in children's nursing – an area Victoria was keen to make her mark in.

Lynne, 54, said, 'It's very emotional and bittersweet because this year Victoria should have been there. She would have been so excited. We had Victoria for 19 years and that was wonderful, but it should have been much longer. The thing we can think about is that her legacy lives on, both in this award and in our charity.'

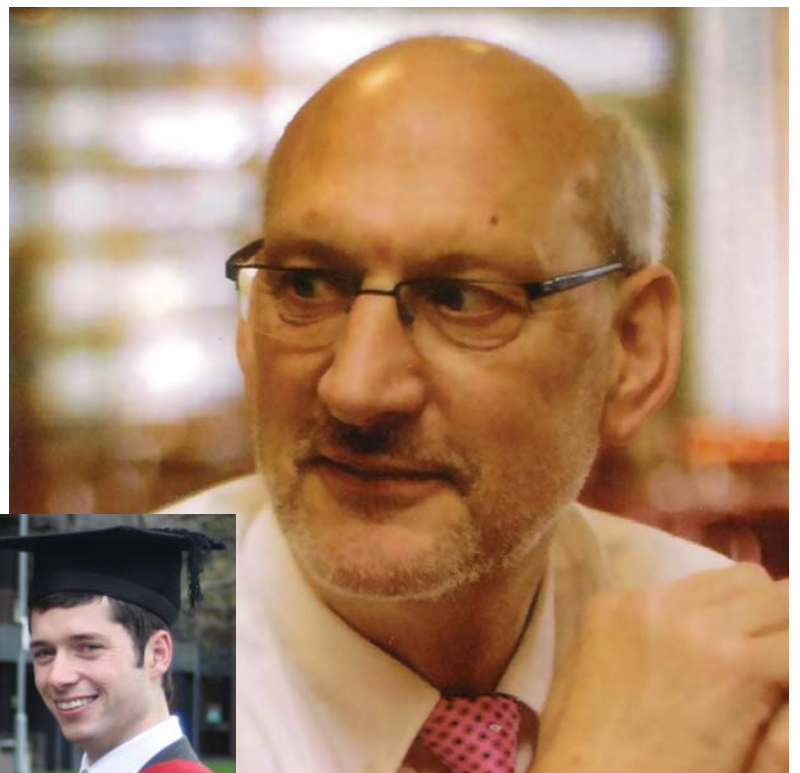
Victoria's parents, along with her close friends, set up Victoria's Wish, a charity which helps families who have children with cancer or other life-limiting illnesses by providing respite and fun in the form of days out and trips.

Chris wins the first Nigel Leech Award

Social work student **Chris Taylerson** (inset) is the first student to be awarded the *Nigel Leech Award* – given to a student who excels in their dissertation studies in the final year of their programme.

The award reflects a student's hard work, dedication and commitment to social work and their studies. The award is in memory of social work lecturer Dr Nigel Leech (main picture), who was fastidious in maintaining high standards for dissertations and was an advocate for maintaining academic rigour in dissertations produced by all of our students.

The award is the result of close consultation between Nigel's family, the Dean, the social work team and the Vice-Chancellor's office. It will be an annual award to mark Nigel's contribution to social work studies at Teesside and in particular, the production of good quality dissertations.



Service user Edna

talks about her impact on the student experience

Edna felt let down by the system when she was younger, but having recently come back into it she has seen massive changes for the better. She shares her story with health and social care students so they can learn from her experiences.



'I started working with the School nine years ago and came in about twice a year to share my experience of the health and social care system with students. As the University started to do more work with service users and carers I became more involved. Now I come in frequently to speak to students.

'I've shown 1,000 students a video I made for the School in which I talk about good nursing, and I've been involved in course development – I am part of a group that's been developing the new nursing curriculum due to start in 2012. I also take part in the recruitment of new students and help form the questions student nurses are asked at interview.

'My story is not a pleasant one but has changed in recent years. I had polio when I was 11 months old and went straight into the system in 1952, an abysmal system, not through lack of care, but through a lack of understanding. It was a harsh regime for polio victims and gave me a lasting fear of occupational therapists and nurses; I was afraid and stayed away for many years. In the last few years I went back into the system and found there was a

massive change for the better. I felt comfortable; there was a new culture of asking people what they wanted, and not pushing them. It's made a great difference to my personal life. I want it to continue and that's why I come to speak to students.

'Telling my story is cathartic and it's good for students to hear a real story, to understand the pain, worries and anxiety service users feel. I know it works because of the feedback I get from students and the questions they ask me.

'The atmosphere in the School is very friendly and comfortable. I enjoy what I do and the carers and service users are taken seriously, it's not just a tick box exercise. I am very well looked after and accommodated and feel valued and appreciated.'

'I came to Teesside in 1994 and left with a degree in 1997 and feel I owe the University a great deal for that education. Being a girl, and disabled, I was written off as a child, I left school with nothing then in my 40s wanted an education and the system helped me get one, I will always be a supporter of the University and will always give something back.'

Presentation to Frankland Prison

End of life care has been recognised by the Department of Health as imperative to all sectors of health and social care. This includes the needs of prisoners.

The School has been working in partnership with Gill Scott, Macmillan Prison Project Lead for Palliative and End of Life Care, to provide education to the nursing staff within Frankland Prison hospital, also to prison officers who are in the front line of care for prisoners with a palliative care diagnosis.

This is a category A prison and as such prisoners are rarely released, even when dying, thus end of life care needs to be delivered within the prison along with all of the limitations that prison life imposes.

The presentation recognised both the excellent project lead by Gill and the accomplishments of the students, applying the principles of end of life care in a challenging environment.

A very compassionate comment by the prison governor will stay with me. He said that 'supporting the prisoner's family is an important part of end of life care', and reminded us that it was not the families that had committed a crime.



Recent School events

Fifth Palliative Care Conference September 2011



Manjula Patel, Health Services Manager Sandwell Primary Care Trust / Lynda Atter, Tees Valley Alliance, Teesside University / Deborah Hall, Project Manager Compassionate Communities, Teesside University / Edwin Pugh, Visiting Professor in Palliative and End of Life Care, Teesside University and Consultant in Palliative Medicine North Tees and Hartlepool NHS Foundation Trust.

The School's fifth national conference on palliative care, focussing this year on public health aspects, took place in September. It gave participants the chance to explore a whole range of ways in which compassionate community concepts can be built into a range of practical initiatives to improve the way we treat those coming to the end of life.

The conference attracted 130 delegates from health, social care, community, voluntary and other organisations as well as groups and individuals who play a part in improving society's approach to end-of-life matters. There were contributions from local, regional and national experts including Eve Richardson, chief executive of the National Council for Palliative Care and head of the Dying Matters Coalition. Her keynote address looked at how we confront the taboo of death and the work being done to change the national mind-set towards death and dying.

Workshops and other presentations on issues such as human resource policies, education in schools and the role of faith groups made for a varied and very constructive day.

College of Paramedics Regional Conference

Following on from their first successful conference held in Newcastle in March, the College of Paramedics North East Regional Group held a CPD conference at the School of Health & Social Care in October.

Following a welcome and introduction by Professor Paul Keane the keynote addresses were given by Professor Ian Grieves (Visiting Professor in Emergency Medicine at Teesside University) and Professor Andrew Newton (Director of Clinical Services for South East Coast Ambulance Service) who spoke about the future role of doctors in pre-hospital care.

Other presentations addressed current research in paramedic care and the role of the HPC as paramedics' registering body.

This successful event confirms the North East Region and Teesside University as major contributors to the field of paramedic practice.



GRADUATION 2011

The School would like to congratulate our graduates.
WELL DONE and **GOOD LUCK** for the **FUTURE**.



Kirby family celebrate doctorate and degree double

Retired nurses David and Jean Kirby, both 77, saw their son Steve receive his Doctorate and Steve's daughter Charlotte awarded a BSc (Hons) Midwifery at Middlesbrough Town Hall.

Steve, 53, from Great Ayton, works at the University as a senior lecturer in mental health nursing and as a programme leader. His parents were both registered mental health nurses at St Luke's Hospital in Middlesbrough from the 1950s until retirement, and six other family members and friends also worked there.

Steve followed his parents by qualifying as a registered mental health nurse in 1981,

moving into lecturing 20 years later. He said, 'It meant so much to my parents to see their son and grand daughter both graduate. Charlotte is the first in the family to go to University at what I'd call the proper age. I didn't study for my master's degree until I was in my 40s.'

'Charlotte was in the audience as a guest to see me get my doctorate and I'll be on stage as part of the School of Health & Social Care's staff. I'll be able to see her close up crossing the stage to receive her degree and be as proud as punch.'

Charlotte, 25, from Marton, Middlesbrough, is applying for her first midwifery post. She

said, 'I've wanted to be a midwife for as long as I can remember. The degree was really good, every day I learned something completely new. You come out of this degree a completely different person. There was phenomenal support from peers and I have made friends for life. I'm proud to see dad receive his doctorate; it was seven years of hard work and we felt involved throughout.'

Steve's doctorate explored the lives of nine segregated prisoners through interviews, examining their coping mechanisms to survive this experience.



GERMAN STUDENTS

share life changing success



German students Katja, Claudia, Andrea and Rosita shared graduation success having completed the MSc Advanced Clinical Practice (Manipulative Therapies) course.

Katja said, 'Graduating has given me the opportunity to change jobs, I now work as a research fellow at Bochum University of Applied Sciences for Health Care Professions. Studying at Teesside was quite a journey which I've realised hasn't come to an end, but rather set off in a new and exciting direction!'

For Andrea the graduation was very impressive, as such ceremonies don't take place in Germany, 'The whole day let us feel that we had really achieved a further step in our professional education. The University has changed my life – I have different opportunities now and can apply for jobs in education and science, as well as health, in the area of physiotherapy.'

Completing the master's programme has also opened up new possibilities for Claudia, 'The situation at universities in Germany differs from the systems of other countries. This means therapists with the skills I have acquired at Teesside are needed in research and teaching so the master's has been a great advantage to my career prospects.'

Pictured above are Katja Ehrenbrusthoff, Claudia Kockritz, Rosita Boose and Andrea Struss.

A STUDENT SAYS

Helen Louise Hale BA (Hons) Social Work (Flexible Route)

Helen came to Teesside to gain a professional qualification in social work to advance her career within health and social care.

'I work full-time within a local authority in the Emergency Duty Team (EDT). I've worked in social care and health for a number of years, and although I have a variety of qualifications I am not a fully qualified social worker. With the support of my workplace I have started on year three of the social work degree at Teesside.

'I enjoy the practical work with the public; however I am mindful that I enter the lives of individuals at possibly one of the most traumatic times of their lives, when they are in crisis. For me, social work takes on many guises. I believe it's a vocation, it doesn't simply consist of form filling and completing assessments, it is an imaginative and creative role.

'Following an access course I completed a BSc (Hons) Health and Human Science degree. I then went on to work with adults with complex needs within a community setting, moving later to work with adults who have learning disabilities, then to supporting adults with multiple physical and complex needs. I have been fortunate to witness people change and develop in many areas of their life.

'I've successfully completed two placements, one with the national charity Shaw Trust who support disadvantaged people to prepare for work, find jobs, and live independently. While in placement I supported a group of ten employees in gaining an NVQ Level 1 qualification in volunteering. Achieving this guaranteed them an interview to volunteer at the London 2012 Olympic and Paralympic Games. I entered the 2010 London Run to the Beat half marathon on behalf of Shaw Trust. I also, with the backing of employees, management and my practice teacher, entered the Social Vision Photography competition 2010. This is a national competition for social enterprises. I was Northern England's finalist, which was a huge achievement.

'I am the student representative for the flexible route students within my cohort, my friends have the knowledge that I will act in the best interests of the group – I use the term friends rather than fellow students as we have a friendship both inside and outside of the University. I am also a Student Approval Panel member, and subsequently a national QAA student member.'





Welcome to Jim Greer

The School welcomes the new Social Work Subject Leader, Jim Greer, to the team.

Jim's 25 year career has encompassed both social services and academia and he is committed to maintaining close links with both of these sectors, believing in the importance of knowledge exchange between them. He started his career in social care as a volunteer providing full time personal care to a student with disabilities. After completing his social work training he worked with a wide range of service user groups before specialising in working with

people with mental health problems. This specialism continued through his work as a social services manager and as a senior lecturer in psychology and social work.

More recently, Jim managed a major programme of innovative health and social care projects across 12 local authorities for a regional organisation, most of which involved the use of new technologies to improve the effectiveness and efficiency of care service delivery.

He is registered with the General Social Care Council and a member of the British Psychological Society. He is particularly interested in applications of psychology

within social work and developing management, organisational and research skills in social workers. Jim is committed to helping social work students develop a strong evidence-based approach and to have confidence in the value of their skills and professional expertise.

While at the University of Sunderland he developed and managed highly successful programmes and modules in counselling and psychology. Jim will use this experience to lead the social work team in redesigning the social work programmes to meet new regulatory standards.

MSc Physiotherapy Studies

The MSc Physiotherapy Studies programme is a 15 month taught programme, based at the Middlesbrough campus. We offer students the opportunity to study contemporary evidence-based Physiotherapy issues within a global context, taking into account the diversity of settings, cultures and health care systems.

We offer modern state of the art teaching accommodation in our Centuria South physiotherapy laboratories, and access to extensive library facilities.

This course provides Indian students with an introduction to evidence-based practice, critical thinking and writing. They also have the opportunity to finish off their studies with a piece of live research, which they would not experience if they studied on a master's programme at home.

Current student Kiranjit Bhullar commented, 'I really value the personal responsibility I have been given to go and research facts myself then to discuss them with my classmates and the teachers. Now I am able to really analyse all aspects of my own practice as well as that other people'. Nancy Sharma agrees, 'this course introduced me to a different learning experience. Our supportive and informative lecturers made this transition of study much easier.'

Vandana Jaju points out other benefits for Indian students studying here at Teesside, 'I have enjoyed my studies at Middlesbrough as this is the cheapest place for any International students.'

Vandana likes the calm and friendly environment here, and Sravanthi Thakallapally says, 'I love the the way people speak here. People here are good and friendly. As an international student I didn't face any problem regarding security'.

For further information please contact:

Dr Marjorie L Wilson
Programme Leader

E: m.wilson@tees.ac.uk
T: +44 (0)1642 384529

Professor Rob's a National Teaching Fellow

Congratulations to Professor Rob McSherry, Professor in Nursing and Practice Development, on his National Teaching Fellowship award.

Rob will receive his Fellowship in a special ceremony in London in October. Rob is one of 55 to be awarded this academic year. These prestigious £10,000 Fellowships are awarded by the Higher Education Academy to academics from universities in England, Northern Ireland and Wales, in recognition of their excellence in learning and teaching.

Rob could not believe that he had been awarded the Fellowship. He said, 'it wasn't expected and I feel quite humbled by the recognition from my peers. It's good not just for me but for the whole of Teesside University's School of Health & Social Care. I'll be using the £10,000 towards supporting the student experience here.'

Professor Paul Keane OBE, Dean of the University's School of Health & Social Care, said, 'this is excellent news for Rob and the School, which once again acknowledges the enhancements and innovations in our Learning and Teaching.'



NEW nursing curriculum



The Nursing and Midwifery Council (NMC) published new standards for pre-registration nursing education in September 2010. The new standards aim to ensure that nurses are equipped with the knowledge and skills to deliver high quality nursing care within and outside of the hospital setting, to lead and develop services and to meet the challenges presented by changing health care needs and public health priorities (NMC, 2010).

For further information please contact:

Jill Foley
Programme Director Pre-registration
Nursing

E: jill.foley@tees.ac.uk

The School of Health & Social Care's programmes are due to be approved in line with the new standards in May 2012. In preparation for this, an extensive consultation exercise has been undertaken with key stakeholders including local NHS and independent sector placement providers, practice mentors, students and service users and carers. This has resulted in a wealth of information which is currently being used to inform the development of the new curriculum and to ensure it meets both national and local health care needs.

The programmes will be at degree level and students will follow one of the four fields of practice: adult, child, learning disability or mental health nursing. They build upon the strengths of the existing programmes but will include different placement models and increased focus on some areas of practice; for example safeguarding, long term conditions and health improvement.

STAFF PROFILE

Marion Grieves Assistant Dean Recruitment and Marketing

Since starting her nursing career in the 1970s Marion has gained experience across many of the nursing fields in adult care including medical, surgical coronary care and body image nurse specialist.

Joining education in 1989 she became heavily involved in teaching student nurses. Marion was a Subject Leader before taking on the role of Assistant Dean for Recruitment and Marketing.

She is passionate about health and social care providers having the best skills and knowledge to make a difference to client care. It is this passion that drives Marion's enthusiasm ensuring that potential candidates considering health and social care as a career have the best knowledge and attributes to enable them to be the healthcare professionals of the future.

Marion says, 'I am pleased to announce that the School achieved the targets set by the SHA for all full time programmes, including the all-graduate entry for the nursing programmes commencing September. The School has experienced a very successful application and recruitment cycle this year with an increase of almost 50% in applications across all full-time courses.'



The excellent standard of the applications received by the programme teams meant an increased input by academics, clinicians and practitioners in the shortlisting and interview process.

'I would like to thank all involved for their time and commitment to the admissions process. With your support and feedback we continually strive to improve the quality of the admissions process for all involved.

In the current time of change and uncertainty it is imperative that we continue to work together to ensure that we get the best candidates.

'I look forward to continued good partnership working in the future to ensure our students effectively contribute to the workforce locally, nationally and internationally.'

Ultrasound training for paramedics

Simon Richards (Programme Leader, Medical Ultrasound) and Bob Jarman (Visiting Fellow, Emergency Ultrasound) have been working in collaboration with the South East Coast Ambulance Service (SECAMB) to develop a point-of-care ultrasound training package, suitable for critical care paramedics.

The training started this year with a two-day intensive weekend course for each of the two cohorts, delivered at the ambulance service's headquarters in Banstead. In total there are 35 paramedics undergoing the training programme. The course involved a mix of lectures, workshops and practical sessions. The candidates are now about to commence their formal supervised practice at placements across the South East, each

being mentored by an experienced consultant in emergency medicine with an expertise in point-of-care ultrasound. Following demonstration of satisfactory progress, the candidates will progress to unsupervised practice in the pre-hospital arena. The images taken will be assessed by their mentors and at this stage will not be used to decide on patient management.

After they have made progress and gained experience, the candidates' practical and theoretical competence will then be assessed at a 'finishing school' to take place in the spring of 2012.

Bob and Simon have been involved in discussions about developing a paramedic curriculum for pre-hospital ultrasound with the College of Paramedics. Other ambulance Trusts have also expressed an interest.



Spotlight on

FORENSIC RADIOGRAPHY COURSES AT TEESSIDE

We are pleased to announce that the Postgraduate Certificate in Forensic Radiography, MSc Forensic Radiography, BSc (Hons) Crime Scene Science and Foundation Degrees in Police Studies and Professional Policing have achieved Skillsmark, the quality mark for the justice, community safety and legal services sectors.

Teesside University and the School of Health & Social Care have a history of cooperation with Skills for Justice, and through personal contact became involved in early consultation on the development of Skillsmark. Achieving Skillsmark, is an excellent achievement for the team, School and University.

For further information about Forensic Radiography courses contact:

Jacquie Vallis | E: j.vallis@tees.ac.uk | T: 01642 384062



Skillsmark[®]

Rewarding excellence

Recent staff publications

Dr Liane Azevedo – Senior Lecturer, Physical Activity/Exercise Sciences

Vidoni, C. & Azevedo, L.B., 2012. Effects of a group contingency strategy on middle school physical education students' heart rates. *European Physical Education Review*.

Professor Alan Batterham – Professor in Exercise Science

Batterham, A.M., George, K.P., Birch, K.M., Pennell, D.J. & Myerson, S.G., 2011. Growth of left ventricular mass with military basic training in army recruits. *Medicine and Science in Sports and Exercise*, 43 (7), p. 1295-1300.

Kelly, P., Doherty, A., Berry, E., Hodges, S., Batterham, A.M. & Foster, C., 2011. Can we use digital life-log images to investigate active and sedentary travel behaviour? Results from a pilot study. *International Journal of Behavioral Nutrition and Physical Activity*, 8, art. no. 44.

Atkinson, G., Batterham, A.M., Jones, H., Taylor, C.E., Willie, C.K. & Tzeng, Y.-C., 2011. Appropriate within-subjects statistical models for the analysis of baroreflex sensitivity. *Clinical Physiology and Functional Imaging*, 31 (1), p.80-82.

Perruchoud, C., Eldabe, S., Durrer, A., Bovy, M., Brookes, M., Madzinga, G., Garner, F., Batterham, A.M., Menoud, C., Jacobs, M., Gulve, A., Buchser, E. & Perruchoud, C., 2011. Effects of flow rate modifications on reported analgesia and quality of life in chronic pain patients treated with continuous intrathecal drug therapy. *Pain Medicine*, 12 (4), p.571-576.

Dr John Blenkinsopp – Assistant Dean, Research

Park, H. & Blenkinsopp, J., 2011. The roles of transparency and trust in the relationship between corruption and citizen satisfaction. *International Review of Administrative Sciences*, 77 (2), p.254-274.

Stephen Conway – Senior Lecturer, Research Methods

Conway, S., 2011. Introduction, in Conway, S. (ed). *Governing death and loss: Empowerment, involvement and participation*. Oxford: Oxford University Press.

Conway, S., 2011. Public health developments in palliative care services in the UK', in Sallnow, L., Kumar, S. & Kellehear, A. (eds). *International perspectives on public health and palliative care*, Routledge.

Philip J Cosson – Senior Lecturer, Diagnostic Radiography

Crompton, G. & Cosson, P., 2011. A systematic review comparing the appropriateness of the intravenous urogram and the computed tomography urogram in terms of diagnostic accuracy and risk of radiation dose for patients with urolithiasis. *Radiography*, In Press, corrected proof, online 9 August 2011.

John Dixon – Reader

Hatton, A.L., Dixon, J., Rome, K. & Martin, D.J., 2011. Standing on textured surfaces: effects on standing balance in healthy older adults. *Age and Ageing*, 40 (3), p.363-368.

Holey, E., Dixon, J. & Selfe, J., 2011. An exploratory thermographic investigation of the effects of connective tissue massage on autonomic function. *Journal of Manipulative and Physiological Therapeutics*.

Sandra Duggan – Project Coordinator for service user and carer involvement

Binks A. & Duggan, S., 2011. Learning from the People with Experience: service users and carers at the heart of the student experience. *Authenticity to Action Conference*. University of Central Lancashire, Preston, 22 June 2011.

Walton P & Duggan, S., with service user and staff colleagues 2011. A virtual platform for service users and carers to influence professional education: VLE/Blackboard resource centres in two universities.

Authenticity to Action Conference.

University of Central Lancashire, Preston, 22 June 2011.

Mary Dunning – Senior Lecturer

Dunning, M., 2011. Mission possible-talking the talk & walking the walk; an introduction of the development of a person-centred value based practice model. Tees, Esk and Wear Valleys NHS Foundation Trust. *Spirituality Sharing Good Practice Conference*. St John's College, Durham. 6 July 2011.

Dawn Fraser – Senior Lecturer, Occupational Therapy

Fraser, D., 2011. Role emerging placements – what next? College of Occupational Therapists. *College of Occupational Therapists Annual Conference 2011*. Brighton. June 2011.

Fraser, D., 2010. Community and Ageing. *Housing, Theory and Society Journal*, 27(4) p.372-373.

Dr Nigel Hanchard – Senior Lecturer, Physiotherapy

Hanchard, N.C.A., Goodchild, L.M., Thompson, J., O'Brien, T., Davison, D. & Richardson, C., 2010. A questionnaire survey of UK physiotherapists on the diagnosis and management of contracted (frozen) shoulder. *Physiotherapy*, 97 (2), p.115-125.

Hanchard, N.C.A., Goodchild, L.M., Thompson, J., O'Brien, T., Davison, D., Richardson, C., Watson, H., Wragg, M., Mtopo, S. & Scott, M., 2011. Evidence-based clinical guidelines for the diagnosis, assessment and physiotherapy management of contracted (frozen) shoulder. V.1.5, Standard. *Physiotherapy*. Endorsed by the Chartered Society of Physiotherapy. www.csp.org.uk/skipp.

Dr Helen Handoll – Senior Lecturer, Research/Research Fellow

Chin, K. J. & Handoll, H.H.G., 2011. Single, double or multiple-injection techniques for axillary brachial plexus block for hand, wrist or forearm surgery in adults. *The Cochrane Database of Systematic Reviews*, 7, Art No. CD003842.

Handoll, H.H.G., Sherrington, C. & Mak, J.C.S., 2011. Interventions aimed at improving and restoring mobility after hip fracture surgery in adults. *The Cochrane Database of Systematic Reviews*, 3, Art No. (CD001704).

Dr Nicola Heslehurst – Senior Lecturer, Research

Smith, S.A., Heslehurst, N., Ells, L.J. & Wilkinson, J.R., 2011. Community-based service provision for the prevention and management of maternal obesity in the North East of England: A qualitative study. *Public Health*, 125: p.518-524.

Heslehurst, N., Bell, R. & Rankin, J. 2011. Tackling maternal obesity: the challenge for public health. *Perspectives in Public Health*, 131 (4), p.161-162.

Professor Liz Holey – Deputy Dean

Harland, N. & Holey, E., 2011. Including open ended questions in quantitative questionnaires – theory and practice. *International Journal of Therapy and Rehabilitation*, Vol 18, (9) p.482-487.

Holey, E., Dixon, J. & Selfe, J., 2011. An exploratory thermographic investigation of the effects of connective tissue manipulation. *Journal of Manipulative and Physiological Therapeutics*, Volume 34, (7) P457-462.

Maggie Jackson – Senior Lecturer, Social Work

Jackson, M., 2012. Children, grieving and loss. In Adams, R. (ed) *Working with children and families*. Palgrave Macmillan: Basingstoke. Ch 15.

Sue Jones – Research Associate

Jones, S.E., Hamilton, S., Perry, L., O'Malley, C. & Halton, C., 2011. Developing workable research methods: Lessons from a pilot study with vulnerable participants and complex assessments. *Journal of Research in Nursing*, 16 (4), p.307-318.

Steven Muncer – Principal Lecturer/Academic Tutor Doctorate in Clinical Psychology

Muncer, S.J. & Knight, D., 2011. The syllable effect in anagram solution: Unrecognised evidence from past studies. *Journal of Psycholinguistic Research*, 40(2), p.111-

118. 120. DOI 10.1007/s10936-010- 9159-6.

Adams, J.W., Stone, M., Vincent, R.D. & Muncer, S. J., 2011. The role of syllables in anagram solution: A Rasch Analysis. *Journal of General Psychology*, 138(2), p.1-15.

Knight, D. & Muncer, S.J., 2011. Type and token bigram frequencies for two through nine letter words and the prediction of anagram difficulty. *Behaviour Research Methods and Instrumentation*, 43(2), p.491-498. DOI 10.3758/s13428-011-0068-x

Ally Sanderson – Senior Lecturer, Adult Nursing

Brooker, C. & Nicol, M., 2011. Nursing patients with disorders of the eye and vision, chapter 13. *Alexander's Nursing Practice*. 4th edition. Edinburgh: Churchill Livingstone/Elsevier publishers.

John Sedgewick – Programme Director, multi-professional programmes

Kafka, T., Chamney, M., Drinkwater, A., Pegoraro, M. & Sedgewick, J., 2011. Pain in chronic kidney disease: Prevalence, cause and management. *Journal of Renal Care*, 37 (2), p.114-122.

Professor Janet Shucksmith – Assistant Dean, Research

Riva, M., Terashima, M., Curtis, S., Shucksmith, J.S & Carlebach, S., 2011. Coalfield health effects: Variation in health across former coalfield areas in England. *Health & Place*. Special Issue on Health Geographies of Voluntarism, 17 (2), p.588-597.

Dr Vida Zahoori – Senior Lecturer, Research

Maguire, A., Omid, N., Abuhaloob, L., Moynihan, P.J. & Zahoori, F.V., 2011. Fluoride content of Ready-to-Feed (RTF) infant food and drinks in the UK. *Community Dentistry and Oral Epidemiology*.

Maguire, A., Wallis, R., Teasdale, L., Landes., Omid, N., Steen, N.I., Moynihan, P.J., Lloyd, J. & Zahoori, F.V., 2011. Total daily fluoride intake and fractional urinary excretion of fluoride in six-seven year-olds, *58th Annual ORCA Congress*, Kaunas, Lithuania, July 6-9, 2011.



What's on...

8 February 2012

Discovery Day – adult, child and learning disability nursing, dentistry, midwifery, social work

Take part in a hands-on activity similar to those experienced by first-year undergraduates. This will help you to choose the subject you are interested in studying at higher education level.

Further information:

T: 01642 342275

E: enquiries@tees.ac.uk

12 April 2012

Examination of the Newborn Conference

A conference to update midwives, nurses, health visitors and medical staff on current issues relating to routine examination of the newborn.

Further information:

T: 01642 384520

E: r.casey@tees.ac.uk

31 May 2012

Discovery Day – adult, child and mental health nursing, diagnostic radiography, operating department practice, physiotherapy

Take part in a hands-on activity similar to those experienced by first-year undergraduates. This will help you to choose the subject you are interested in studying at higher education level.

Further information:

T: 01642 342275

E: enquiries@tees.ac.uk

20 June 2012

University Open Day

For those who have applied, intend to apply or want to explore the University, our open days give you the chance to tour the campus, view accommodation and meet current students and staff.

Further information:

T: 01642 342275

E: enquiries@tees.ac.uk

13 October and 24 October 2012

University Open Day

For those who have applied, intend to apply or want to explore the University, our open days give you the chance to tour the campus, view accommodation and meet current students and staff.

Further information:

T: 01642 342275

E: enquiries@tees.ac.uk

This publication is available in alternative formats on request. Please contact the Enquiry Service on **+44 (0) 1642 342942** or email **enquiries@tees.ac.uk**.

Teesside University

Middlesbrough
Tees Valley
TS1 3BA UK

T: +44 (0) 1642 218121
F: +44 (0) 1642 342067
www.tees.ac.uk

80% recycled

When you have finished with this newsletter please recycle it