



THE AWARDS
Times Higher Education
**OUTSTANDING EMPLOYER
ENGAGEMENT INITIATIVE**

THE AWARDS
Times Higher Education
UNIVERSITY OF THE YEAR

 Teesside
University

Inspiring success

Science 2 Business Hub – an industry led partnership



Upstream Exploration and Production

'innovative opportunities for the oil and gas sector'

S2B Hub Introduction - Dr Roy Huzzard

3 June 2010

**Solutions
for Business**

Funded by
UK Government

 putting the
Customer First[®]



Project part-financed
by the European Union

European Regional
Development Fund

one
NORTH EAST



Contents

- ***Introducing your S2B Hub***
- ***The people***
- ***Who can we help directly?***
- ***What are our targets?***
- ***Our sponsors***

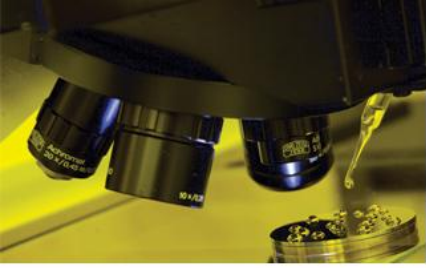


Your S2B Hub

“The industry-led Science 2 Business Hub drives to create projects and innovative solutions for ‘science using’ SMEs in the North East within a three-year timeframe”

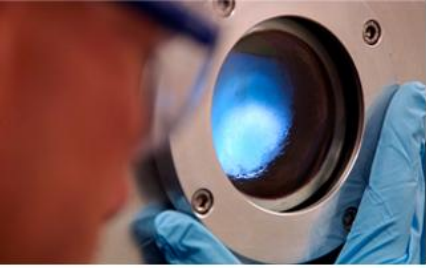
www.tees.ac.uk/s2b

s2b@tees.ac.uk

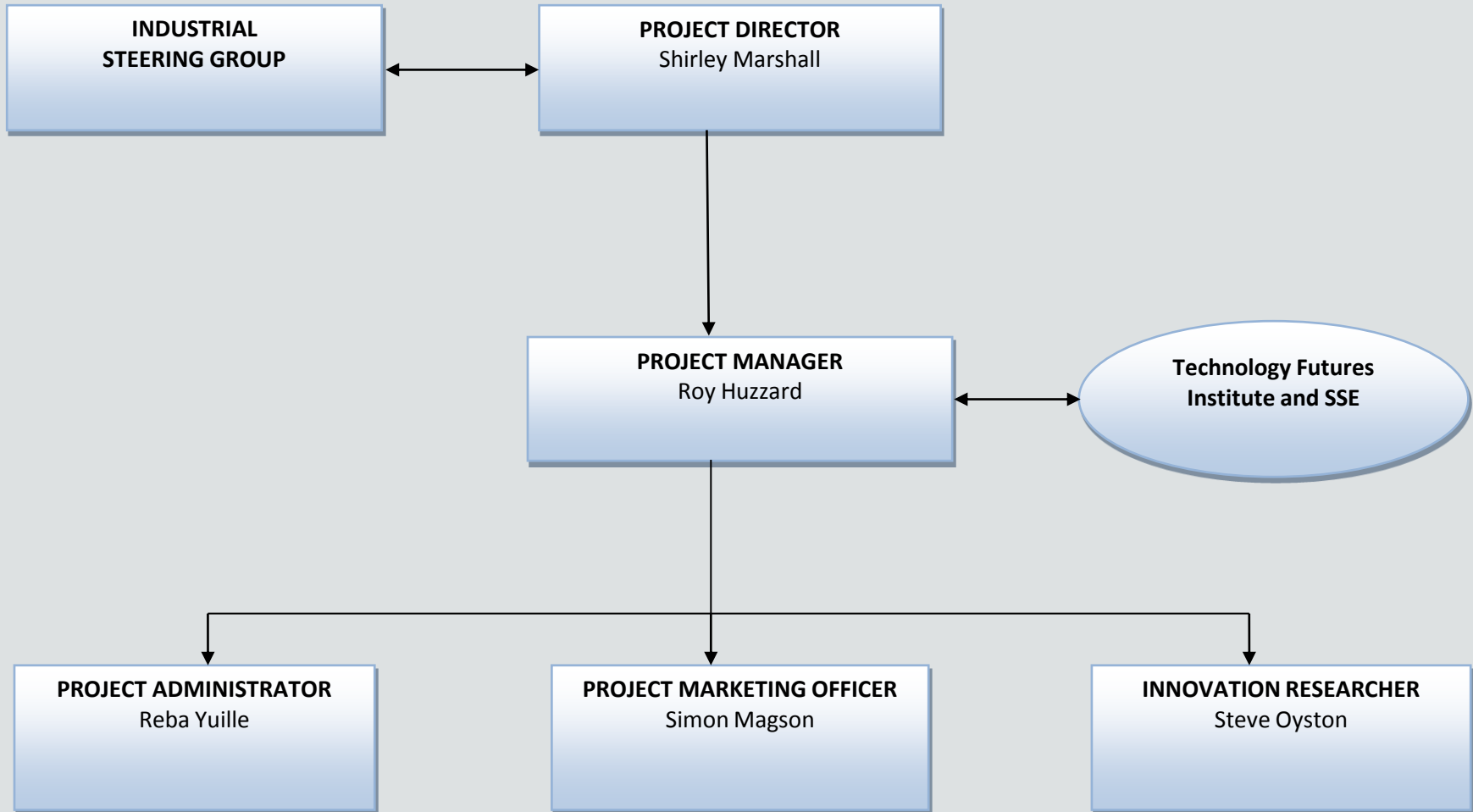


The Hub will introduce North East SMEs to global opportunities and help develop projects and solutions to fit.

Where we can't help directly, we will try to find someone who can solve your problem.



The People





Who we can help directly

We can use a minimum of 2 days assistance for SMEs in the North East of England.

Definition of SMEs

- has fewer than 250 employees
- either annual turnover not exceeding 50 Million Euro
- or annual balance sheet not exceeding 43 Million Euro
- < 25% owned by non SME
 - exceptions - public investment corporations, venture capital companies or institutional investors



Some of our targets

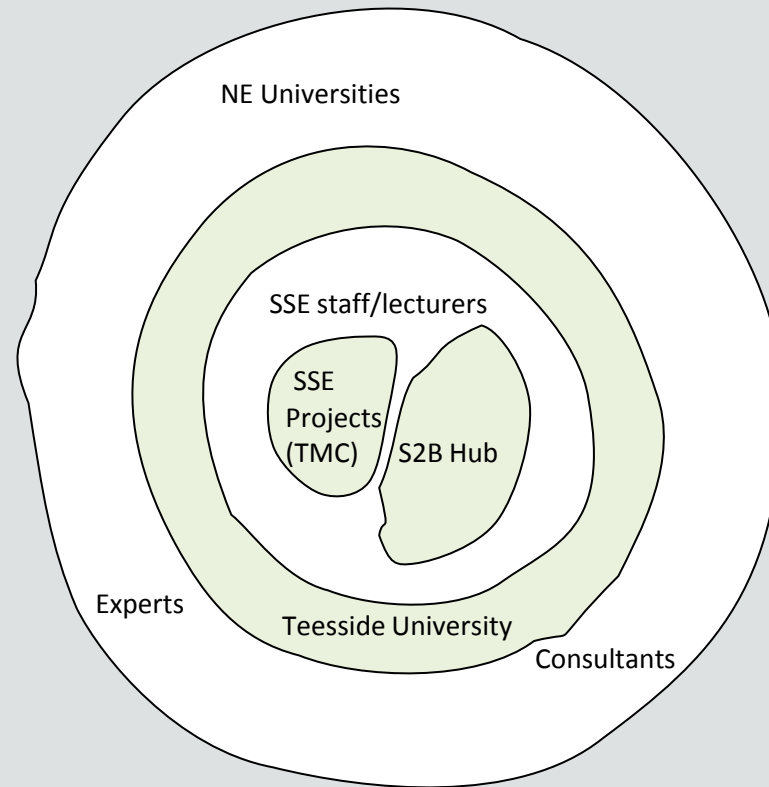
- **Existing SMEs assisted - 100**
- Number of people assisted with skills development - 40
- Gross jobs created - 35
- Gross jobs safeguarded - 65
- SMEs improving their performance - 90

of which:

- 35 improve their environmental management
- 90 new collaboration with the knowledge base



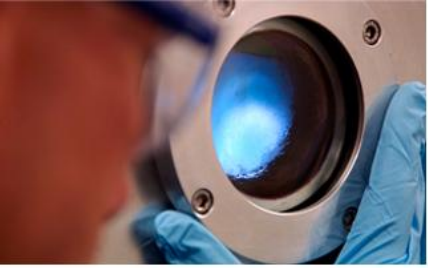
How does the S2B Hub work? (knowing your onions)





Sponsors





Thank You

Any questions please?