



**THE AWARDS**  
*Times Higher Education*  
**OUTSTANDING EMPLOYER  
ENGAGEMENT INITIATIVE**

**THE AWARDS**  
*Times Higher Education*  
**UNIVERSITY OF THE YEAR**

 **Teesside  
University**

Inspiring success

**Science 2 Business Hub** – an industry led partnership

# Strategic Roadmapping for North East SME's

## 6<sup>th</sup> October 2011





**THE AWARDS**  
*Times Higher Education*  
**OUTSTANDING EMPLOYER  
ENGAGEMENT INITIATIVE**

**THE AWARDS**  
*Times Higher Education*  
**UNIVERSITY OF THE YEAR**

 **Teesside  
University**  
Inspiring success

**Science 2 Business Hub – an industry led partnership**



**S2B Hub Introduction - Dr Roy Huzzard  
Strategic Roadmapping - 6<sup>th</sup> October 2011**

**Solutions  
for Business**  
Funded by  
UK Government

 *putting the*  
**Customer First**<sup>®</sup>

 Project part-financed  
by the European Union  
European Regional  
Development Fund

**one**  
NORTH EAST



# Contents

- ***Introducing your S2B Hub***
- ***The people***
- ***Who can we help directly?***
- **Much done – “some” still to do**
- ***Our sponsors***



# Your S2B Hub



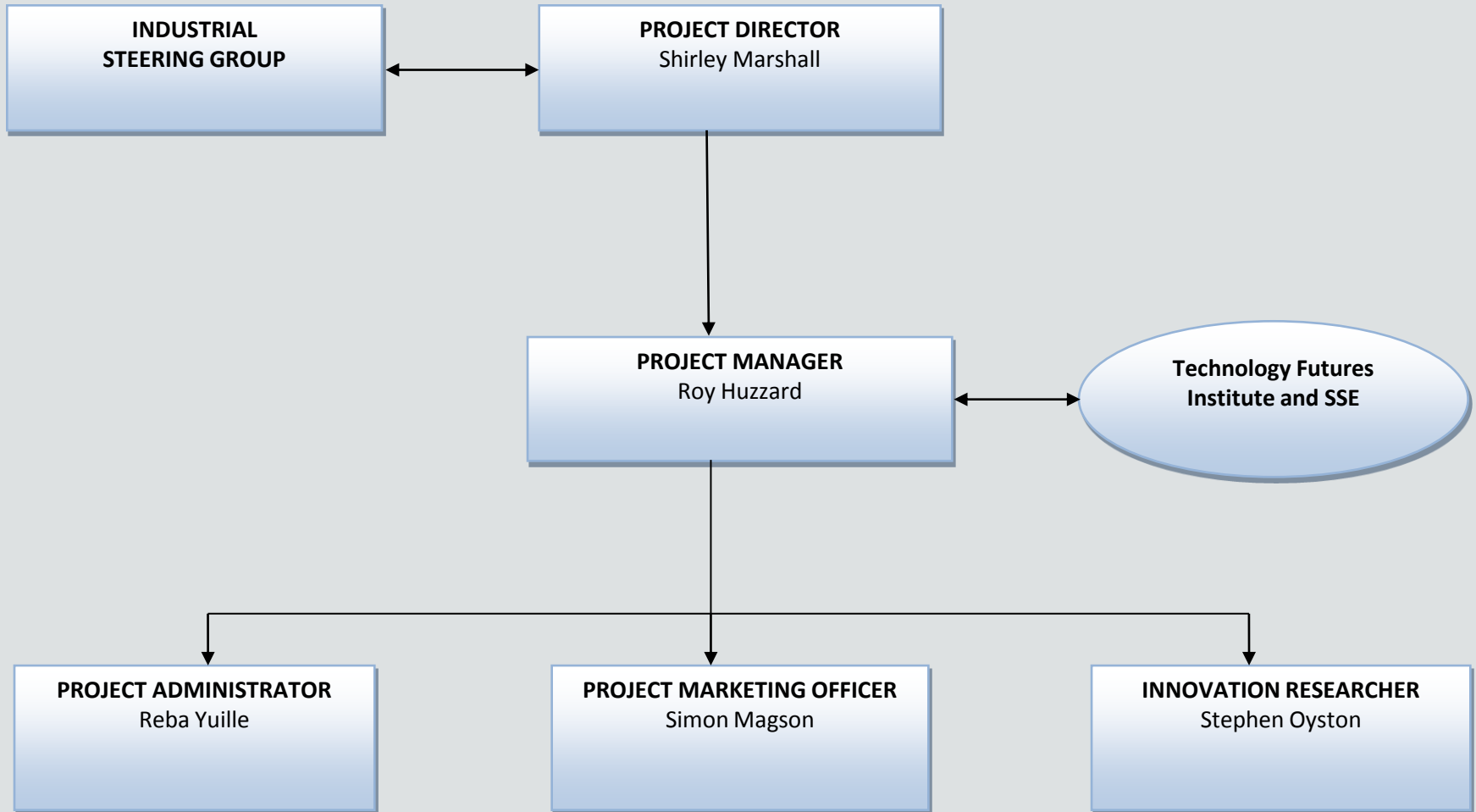
*“The industry-led Science 2 Business Hub drives to create projects and innovative solutions for ‘science using’ SMEs in the North East”*

[www.tees.ac.uk/s2b](http://www.tees.ac.uk/s2b)

[s2b@tees.ac.uk](mailto:s2b@tees.ac.uk)



# The People





# Who we can help directly

We can use a minimum of 2 days assistance for SMEs in the North East of England.

## Definition of SMEs

- has fewer than 250 employees
- either annual turnover not exceeding 50 Million Euro
- or annual balance sheet not exceeding 43 Million Euro
- < 25% owned by non SME
  - exceptions - public investment corporations, venture capital companies or institutional investors



# Remaining targets

- **Much done – some still to do;**
- Bespoke Training – difficult to define
- Prefer Scientific, Technical or Engineering bias
- Teesside University will arrange a course written for your needs for 3 to 20 staff.
- Two or more collaborating SMEs with similar staff training needs can benefit

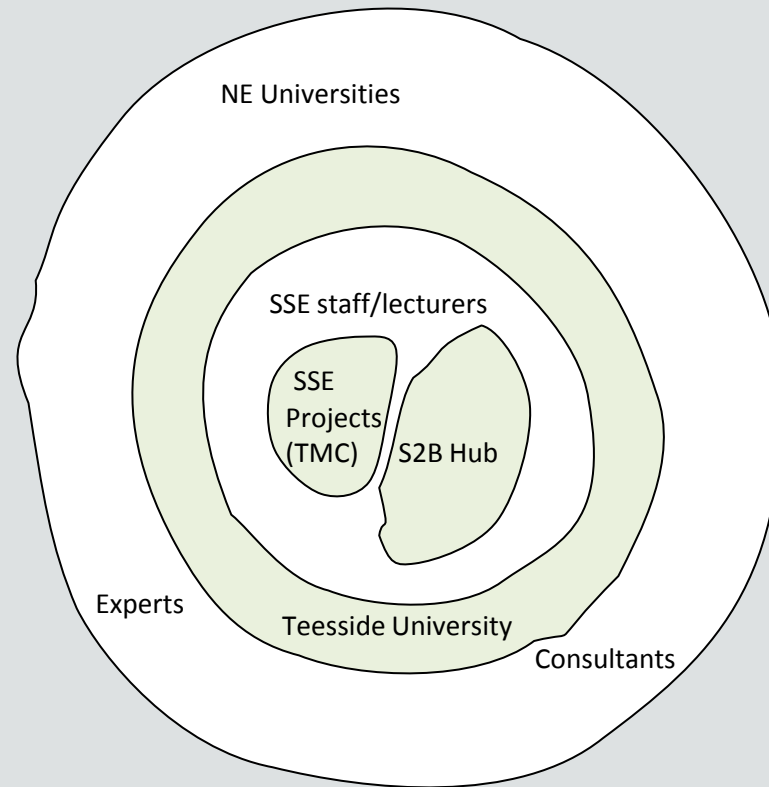


# Remaining targets

- **Much done – some still to do;**
- Environmental Hits
- Companies in the first year of trading
- Companies in a growth phase
- Bespoke Training –or did I mention that before?



# How does the S2B Hub work? (knowing your onions)





# Sponsors





***Thank You***

***Any questions please?***