



‘Innovative opportunities and solutions for the personal care and cosmetics sector’



Introduction - Dr Roy Huzzard

2nd November 2009, 3.00pm-7.00pm
Durham County Cricket Club

Contents

- *Introducing your S2B Hub*
- *The people*
- *Our sponsors*
- *Who can we help directly*
- *What are our targets*
- *How can we help you?*

Introduction to your S2B Hub

“The industry-led Science 2 Business Hub drives to create projects and innovative solutions for ‘science using’ SMEs in the North East within a three-year timeframe”

www.tees.ac.uk/s2b

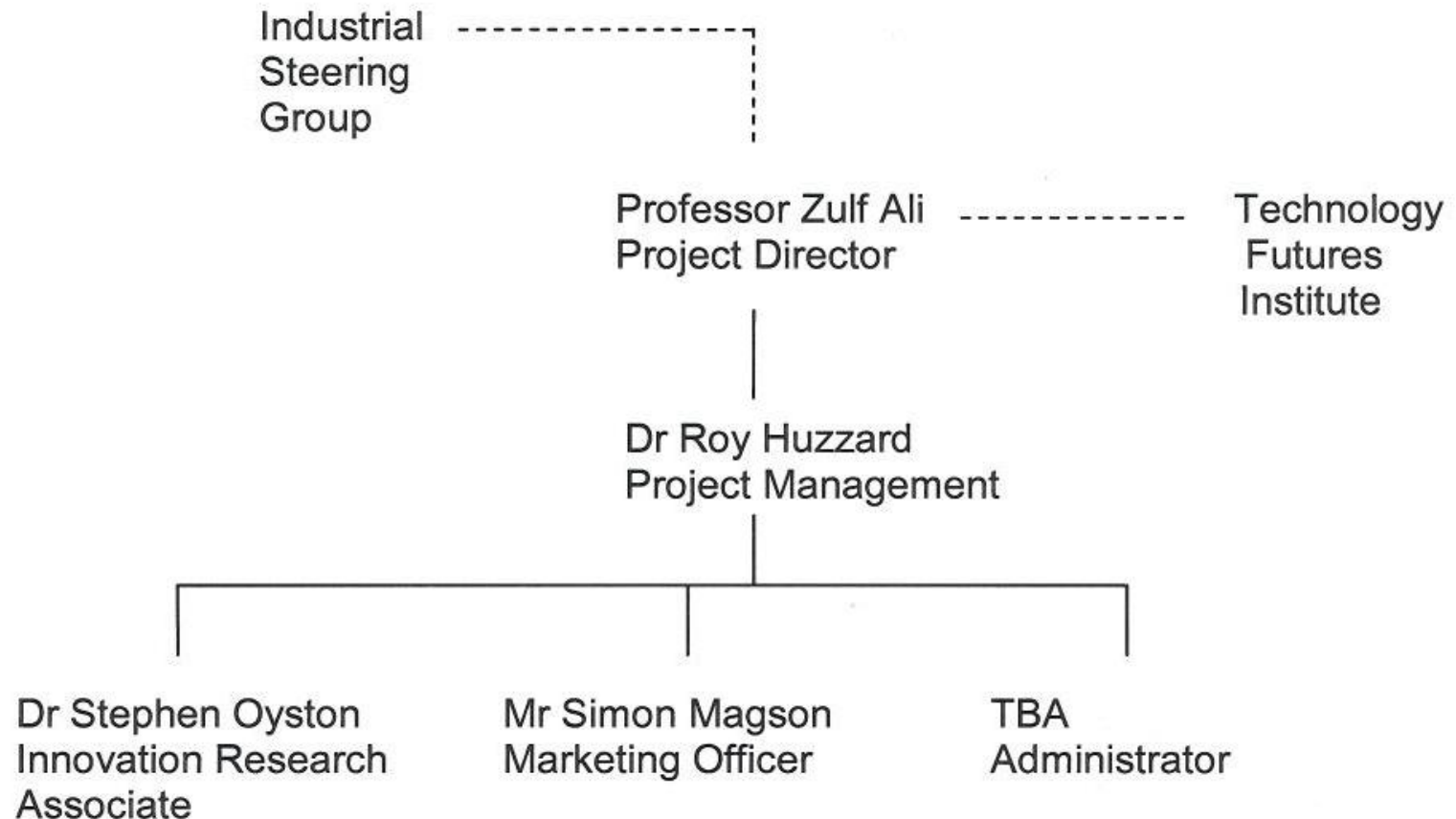
s2b@tees.ac.uk

Introduction to your S2B Hub

The activities in the Personal Care and Cosmetics sector are an example of the plan for the S2B Hub. The hub will introduce North East SMEs to global opportunities and help develop projects and solutions to fit.

Where we can't help directly, we will try to find someone who can solve your problem.

S2B Hub –The People



Who we can help directly

We can use a minimum of 2 days assistance for SMEs in the North East of England.

Definition of SMEs

- has fewer than 250 employees;
- either annual turnover not exceeding 50 Million Euro,
- or annual balance sheet not exceeding 43 Million Euro;
- < 25% owned by non SME
 - exceptions - public investment corporations, venture capital companies or institutional investors,

Some of our targets

Existing SMEs assisted - 100

Number of people assisted with skills development - 40

Gross jobs created - 35

Gross jobs safeguarded - 65

SMEs improving their performance - 90

of which:

35 improve their environmental management

90 New collaboration with the knowledge base

Sponsors



Project part-financed
by the European Union

European Regional
Development Fund 2007 - 13



Facilities at Teesside University

Analytical equipment and testing

Synthetic / Process Capability

***The Teesside Centre for
Nanotechnology & Microfabrication***

Surface Analysis - Electro-Analysis



Facilities at Teesside University

**Dry Etching Metallization
& Thin Film Deposition -**

Photolithography Screen Printing

CNC Micro Milling - Hot

Embossing

**Injection Moulding
(shot volumes, 4 to 15 cm³)**

Laser Ablation



Expertise at Teesside University

- Design and production of new products and processes in a sustainable manner.
- Detection, measurement and characterisation of products and process, to solve problems and create new opportunities.
- Design and production of new materials with novel properties for societal benefit.
- Design of processes, formulations and facilities for the competitive production of new and current products.
- Reaction routes to manufacture new or existing products with lower energy and material consumption and lower hazards.
- Modelling of chemical behaviour, materials interactions and process performance to increase productivity and value.



Introducing today's speakers

The landscape for innovation

- *Mr Steve Boothroyd - Patent Technical Expert, Alliance Boots Global Products Division*
- *Mr Glyn Johnson - Director, Kline and Company*

Developing opportunities

- *Dr. Michael Duncan - European Director for Innovation, Procter & Gamble*
- *Dr. Stan Higgins - Chief Executive Officer, NEPIC*