

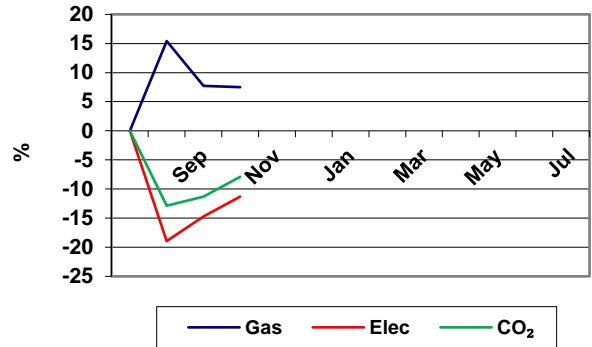
CO₂

CO₂ emissions for this month are 554.7 tonnes, a 3.5% decrease on 2019/20 October emissions.

Total CO₂ emissions for the year are 1,177 tonnes, a 7.9% decrease on last year's emissions.

Since 2005 CO₂ emissions have reduced by 32.9%. In addition, as the Campus has expanded over this period, CO₂ emissions per m² of floor area have reduced by 54%.

% variation from 2019/20 consumption



Gas

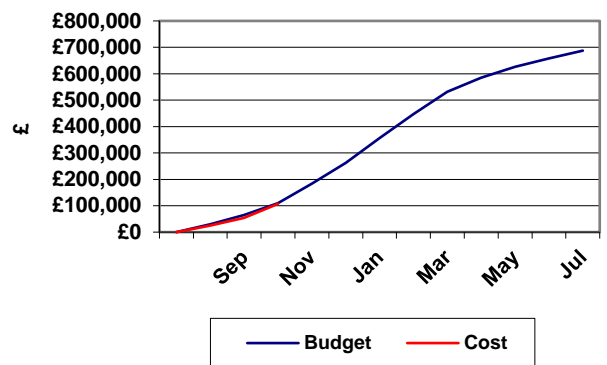
Gas consumption for this month is 1,661,457 kWh, a 7.5% increase on 2019/20 October consumption.

The cost of the gas consumed this month is £54,109, an increase of 8.8% on last year's figure.

Total Gas consumption for the year is 3,153,720 kWh, a 7.5% increase on 2019/20 consumption.

The cost of the Gas consumed in the year is £107,106, an increase of 5.7% on last year's figure.

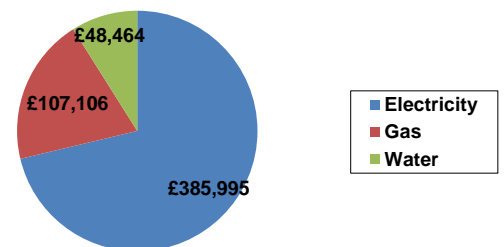
Gas cost vs. budget



Utility Costs

CHP

The Tower CHP generated 78,769 kWh of electricity.



Electricity

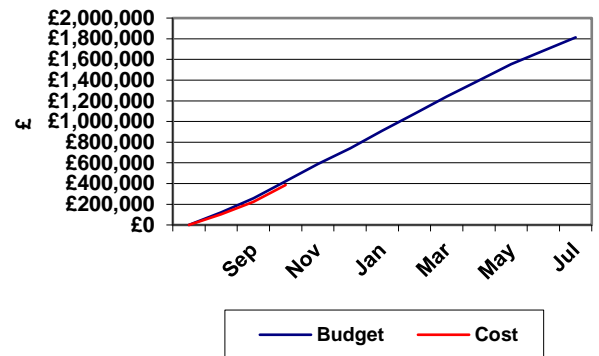
Electricity consumption for this month is 995,596 kWh, a 6.1% decrease on 2019/20 October consumption.

The cost of the electricity used this month is £160,287, an increase of 0.4% on last year's figure.

Total Electricity consumption for the year is 2,385,290 kWh, an 11.3% decrease on 2019/20 consumption.

The cost of the Electricity used in the year is £385,995, a decrease of 3.3% on last year's figure.

Electricity cost vs. budget



Water

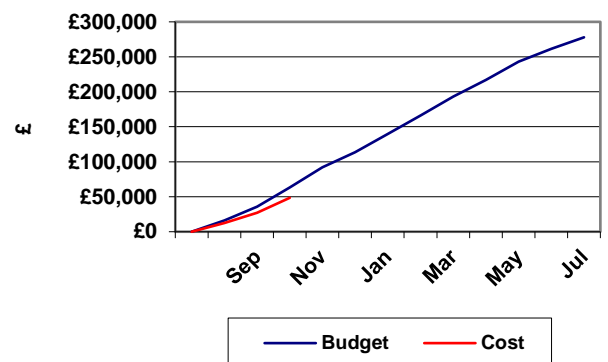
Water consumption for this month is 5,755 m³, a 23.4% decrease on 2019/20 October consumption.

The cost of the Water used this month is £18,948, a decrease of 24.2% on last year's figure.

Total Water consumption for the year is 12,423 m³, a 27.7% decrease on 2019/20 consumption.

The cost of the Water used in the year is £48,464, a decrease of 22.5% on last year's figure.

Water cost vs. budget



Renewable Energy

The NHC PV system generated 945 kWh of electricity.

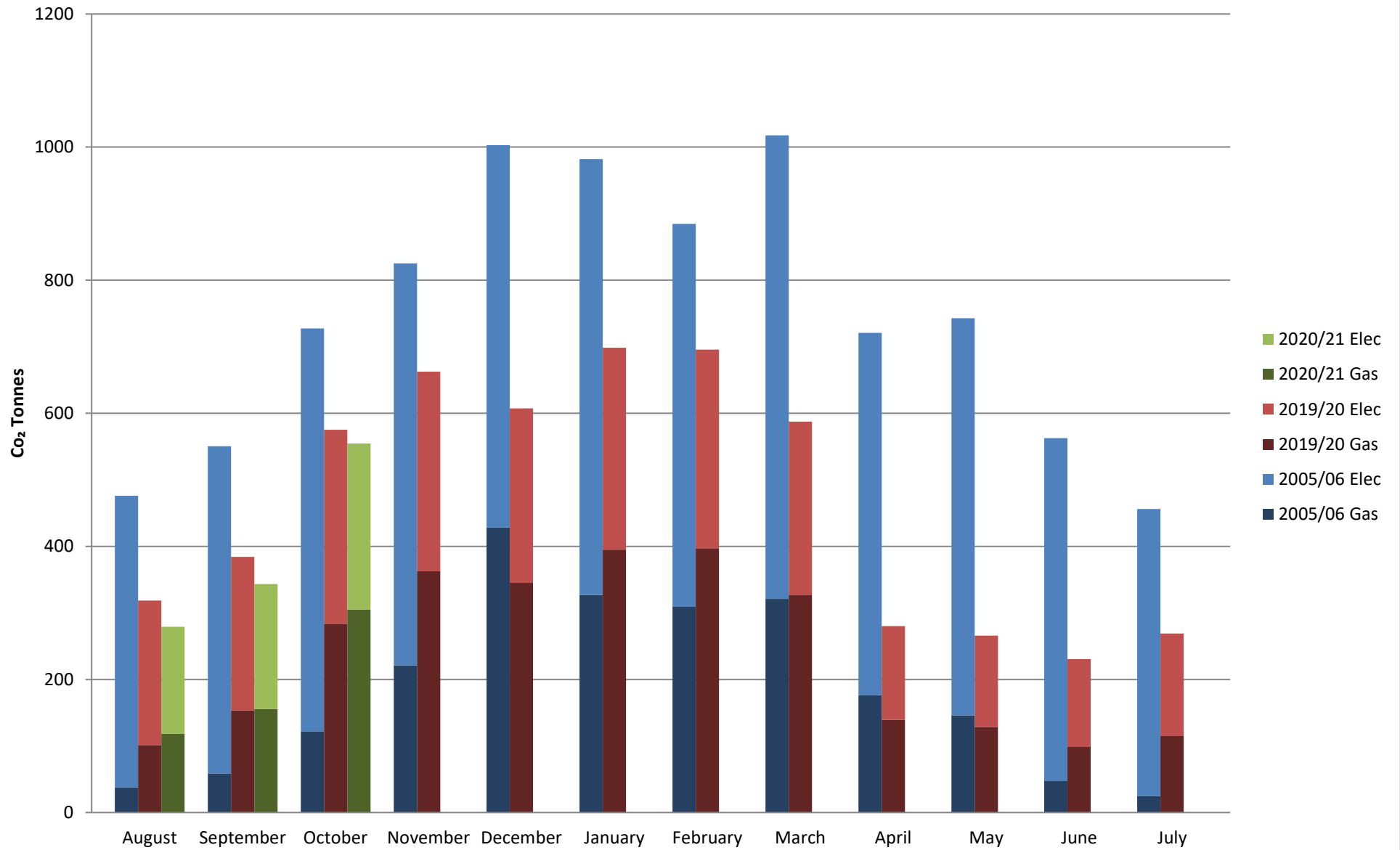
The SLB PV system generated 310 kWh of electricity.

The Curve PV system generated 989 kWh of electricity.

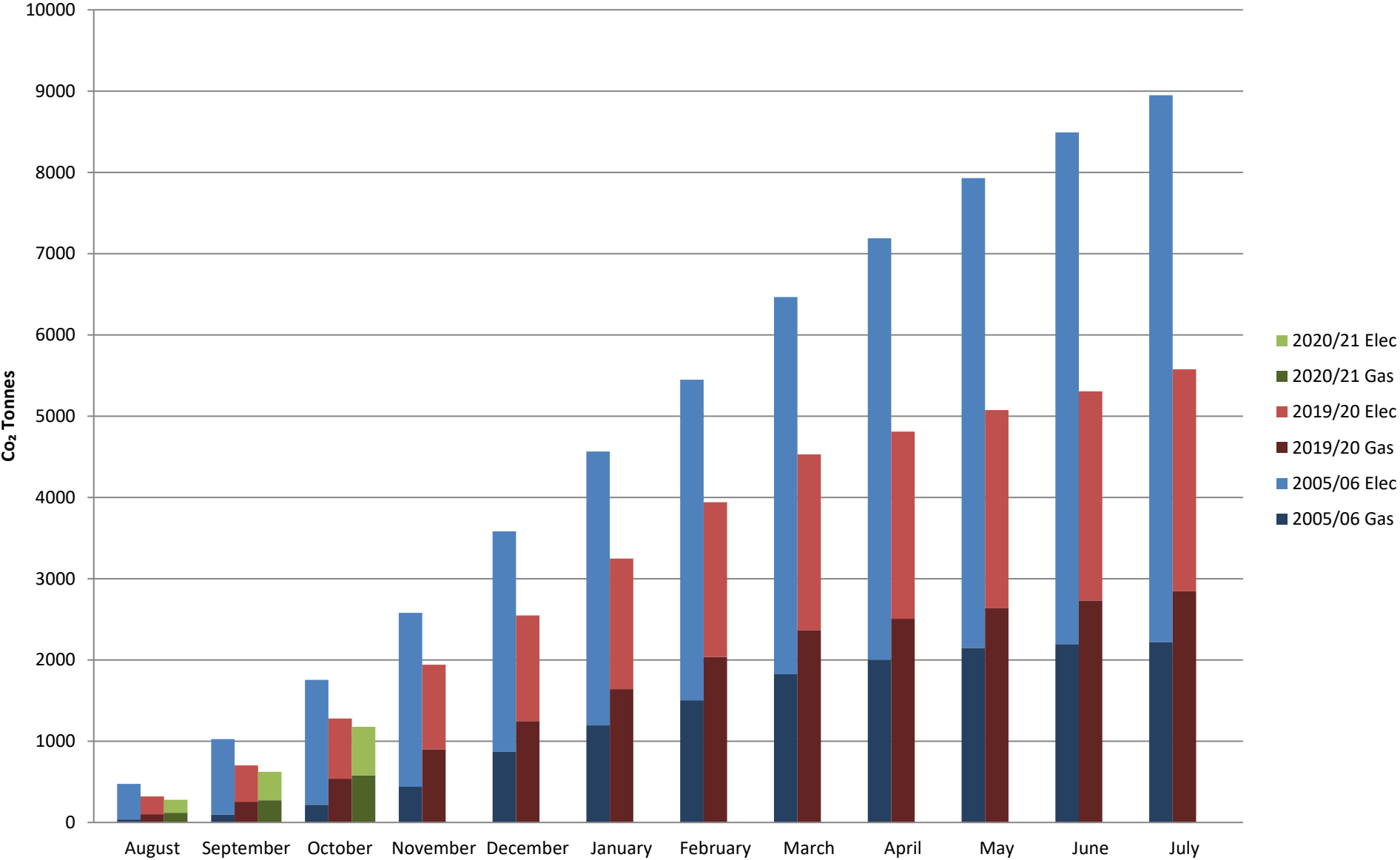
Increases in Consumption

There were no significant increases in consumption in October.

Co₂ Breakdown



Co₂ Breakdown Cumulative



Water mastersheet 2021

	Carryover	August		September		October		Total		Difference
		Cost	Invoiced	Cost	Invoiced	Cost	Invoiced	Cost	Invoiced	
96 Park Lane	-£286.19	£14.39	£41.65	£14.39		£14.39		£43.16	-£244.54	£287.69
Aurora	-£203.87	£3.70		£29.36		£31.50		£64.57	-£203.87	£268.44
Athena	-£1,267.69	£560.71	£489.60	£68.97		£107.47		£737.16	-£778.09	£1,515.25
Centre House	£311.09							£0.00	£311.09	-£311.09
Centuria	-£192.44	£34.90	£956.46	£300.08		£721.39		£1,056.37	£764.02	£292.35
Constantine	-£268.95	£16.04		£163.60		£272.67		£452.31	-£268.95	£721.26
Cook	-£878.38	£12.25		£125.60		£121.32		£259.18	-£878.38	£1,137.56
Education House	-£329.39	£7.98		£35.78		£48.61		£92.37	-£329.39	£421.76
KES 3-11	-£5,732.10	£316.56		£201.08		£367.89		£885.52	-£5,732.10	£6,617.62
Phoenix	£139.02	£507.25	£489.60	£15.51		£41.17		£563.93	£628.62	-£64.68
Main Site (High Rate)	-£15,125.29	£4,276.69	£4,320.79	£4,278.83		£4,276.69		£12,832.20	-£10,804.50	£23,636.71
Main Site (Low Rate)	-£1,541.92	£821.76	£2,558.27	£947.94		£1,480.45		£3,250.15	£1,016.35	£2,233.81
Mbro Tower	-£2,243.88	£295.25		£733.67		£906.89		£1,935.82	-£2,243.88	£4,179.69
Olympia	-£121.89	£21.93	£229.34	£180.18		£308.50		£510.61	£107.45	£403.16
Parkside HOR	-£2,941.04	£525.93		£450.53		£745.46		£1,721.93	-£2,941.04	£4,662.96
Parkside 1-16	-£3,808.21	£486.58	£1,875.84	£411.19		£659.55		£1,557.32	-£1,932.37	£3,489.68
Parkside 17-23	-£2,920.62	£610.65	£816.23	£566.30		£754.79		£1,931.73	-£2,104.39	£4,036.12
Parkside 24-30	-£2,131.77	£209.69	£2,075.49	£276.07		£486.27		£972.03	-£56.28	£1,028.31
Parkside Offices	-£552.29	£76.77		£123.34		£134.43		£334.54	-£552.29	£886.83
Saltersgill	-£1,227.91	£778.76	£489.60	£298.03		£309.12		£1,385.92	-£738.31	£2,124.22
University House	-£6.72	£5.84	£20.79	£18.67		£18.67		£43.18	£14.07	£29.11
Victoria Road	-£437.95	£7.98		£42.19		£48.61		£98.78	-£437.95	£536.74
Waterhouse	-£2,015.62	£24.59		£182.85		£202.10		£409.54	-£2,015.62	£2,425.16
Woodlands Halls 1-7	-£3,139.95	£1,270.46	£1,898.64	£1,259.76		£2,031.80		£4,562.02	-£1,241.31	£5,803.33
Zelos	-£52.19	£4.33		£4.33		£4.33		£12.98	-£52.19	£65.17
Dartmouth - surface water	£0.00	£228.28	£1,037.04	£228.28		£228.28		£684.85	£1,037.04	-£352.19
Darlington	-£1,984.46	£409.48	£514.48	£558.05		£631.23		£1,598.76	-£1,469.98	£3,068.74
MIMA	-£1,618.95	£268.10	£1,427.49	£516.46		£352.37		£1,136.93	-£191.46	£1,328.39
Central Halls	-£4,220.45	£1,560.73		£1,522.24		£2,379.82		£5,462.78	-£4,220.45	£9,683.23
Curve	-£434.43	£14.00	£187.04	£33.24		£31.10		£78.34	-£247.39	£325.73
Fusion Hive	-£920.65	£242.60		£331.30	£851.01	£360.12		£934.01	-£69.64	£1,003.65
Printworks	-£7,937.84	£521.73	£489.60	£81.31		£72.76		£675.80	-£7,448.24	£8,124.04
KES 12-20	-£3,859.54	£166.86		£198.94		£275.93		£641.72	-£3,859.54	£4,501.26
NHC	-£9,139.72	£492.18		£498.83		£505.48		£1,496.50	-£9,139.72	£10,636.22
Student Life		£4.33		£19.30		£17.16		£40.78	£0.00	£40.78
Fusion Hive Total	-£920.65	£242.60	£0.00	£331.30	£851.01	£360.12	£0.00	£934.01	-£69.64	£1,003.65
Darlington Total	-£11,124.18	£901.66	£514.48	£1,056.88	£0.00	£1,136.71	£0.00	£3,095.26	-£10,609.70	£13,704.96
MIMA Total	-£1,618.95	£268.10	£1,427.49	£516.46	£0.00	£352.37	£0.00	£1,136.93	-£191.46	£1,328.39
Main Site Total	-£63,428.41	£13,386.90	£17,975.98	£12,811.56	£0.00	£17,099.10	£0.00	£43,297.56	-£45,452.43	£88,749.99
Grand Total	-£77,092.18	£14,799.25	£19,917.95	£14,716.20	£851.01	£18,948.31	£0.00	£48,463.76	-£56,323.22	£104,786.99